

Countryside Living...

A PERIODIC PUBLICATION OF THE DONALD ROSS LANDOWNERS ASSOCIATION, INC.



Park Cleanup Continues

Extensive clearing of the dense Palm Beach Country Estates Community Park is continuing. The non-native vegetation is being removed and carted away. Expenses are being borne by the PBCE

Landowners Association and the Twisty Pine Playground Association. Expect to see in the near future fencing going up around the perimeter and landscaping being started to replace the vegetation. Volunteers again helped on December 1st, but much of the work is now being completed by heavy equipment.

We still need at least two more sponsors for the fence at \$2,500. Steve and Shari Murray of Municipal Technologies have already donated one section and Bob Berman has offered to pay for the Areca Palms that will be put along the fence on the southern border to shield the park from adjoining neighbors.

Also a big thank you to Denny of Big D Paving for his assistance with clearing with the heavy equipment that he has been doing.

AT&T Will Move Boxes

For several years the Landowners Association and SIRWCD have been talking to Bell South and AT&T about their two switching boxes located at the corner of 75th Avenue and 155th Place in Palm Beach Country Estates. The concern was that vehicles heading south on 75th Avenue had their vision of west-bound vehicles approaching on 155th Place blocked from view.

Michael Danchuk from the Landowners Association had sent photos with the correspondence showing the problems we felt were occurring. We are happy to report that Gale English of SIRWCD in recent discussions with AT&T had come to an agreement and was advised that AT&T will voluntarily move the boxes to the north east corner of the canal and 75th just south of 155th. This is land under control of SIRWCD and the move will eliminate the concerns our community had with the intersection. The transfer should be completed within the near future.

Donald Ross/ Jog Road Connection

Currently per Kathleen Farrell, of the County road department, bidding is scheduled for February 2008, and construction may start as early as April 2008. For those unfamiliar with the project the County is having two traffic roundabouts placed at the end of Donald Ross Road. The first roundabout will connect to 69th Drive. And the second will be just west of 69th drive and connect south to Jog Road and the Mirasol development. There will be sidewalks built on both sides of Donald Ross Road, and on the east side of 69th Drive. With the new elementary school being built in Mirasol the connection will make it easier for PBCE residents to get to our new school, as well as provide another exit if the I-95 interchange is ever blocked.

Officers and Committee Members

Officers:

President - Michael Danchuk	626-2530
1st Vice President - Kevin Baker	748-3376
2nd Vice President - Stephanie Duncan	575-7956
Treasure - Lynn Horne	748-5042
Secretary - Chris Reinhardt	743-8725

Committees:

COP Patrol & Disaster Assistance- Bill Bolds	626-7638
Entrance - Kirk Humphreys	748-4595
Beautification - Valerie Rozzo	743-3290
Car Shows - Scott Rice	723-5552
Helping Hands - Pam Malone	743-9912
Newsletter Editor/Advert. - Nicole Campbell	626-2530
Welcoming - Arie Strobel	748-6784
Sidewalks - Mike Danchuk	626-2530
Mom's Club - Sara Nakashian	748-7744
Disaster Response Team - Bill Bolds	626-7638
Parks - Bill Meyers	745-6632
Bob Berman	627-1118
Kirk Humphreys	748-4595
Chris Reinhardt	743-8725
Tim Brown	748-0709

Information:

Equestrian - Beverly Bean	575-4411
bbeaninc@bellsouth.net	
RV/Camping Club - Connie McCormick	744-2938
SIRWCD - www.sirwcd.org	747-0550
Landowners Association - www.myPBCE.org	
Park - www.twistypinesplayground.org	

Mirasol Elementary

A new principal has been assigned to the soon to be opened Mirasol Elementary School for the 2009 school year. She is Maureen Werner of Limestone Creek Elementary. There is going to be a "Meet and Greet" at the Mirasol school Wednesday, February 20 at 6:30pm in the cafeteria. Current students at Lighthouse and Beacon Cove were sent a letter from her regarding this meeting. Parents of small children who are not currently enrolled in school and will be affected by this change should also attend the meeting to meet the new principal and get information on the new school.



Message from the President

We are starting another new year. A lot has happened in 2007. Several items I felt very strongly about and supported are moving along. Scripps has become a reality, even the nay-sayers and those that wanted it built somewhere else, are now agreeing that it will be good for our community and the north county. The sound walls that allegedly could not be built because of our low density, have been approved, and will eventually be put up alongside of our eastern borders. For those seeking city water it is now here, should be completed soon, and many of our residents are already hooked up. The park is finally getting built as land is cleared, donations are coming in, and soon we will see fencing and landscaping start. Meanwhile our western borders are protected by state, and county land preserves. These things did not just happen, but were achieved by strong volunteer support and efforts by our Association.

I feel our community is well protected from negative development and impacts around us and our Association is strong. Therefore I have decided not to run for reelection as President this May. I feel it is a good time to get new people involved, and hopefully we will have interested residents step up and run for the positions that will be open.

In the upcoming new year I feel the Association will have to work towards getting the park done, monitor the Jog/Donald Ross connection, and follow up on getting the sidewalk/pathways installed as have been promised. Security will be an issue as more people move into the north county, and we will likely need to be pro actively involved. But most importantly we must continue to be unified while having fun, so Palm Beach Country Estates will always be the best place to live in northern Palm Beach County.

Michael Danchuk-President

Donald Ross Landowners Association Meeting November 13, 2007

11-13-07 - Meeting was called to order at 7:32pm Mike Danchuk, President, called the meeting to order. Mike introduced Lynn Home our new Treasurer. Daniela Russell decided not to run at the last election but stayed on until Lynn was able to take over. Daniela will continue to do the tax returns for the Association while Lynn will do the day-to-day business. Mike wanted to thank Daniela for all she has done for the Association. Also present was Chris Reinhardt Secretary. Board Officers, Stephanie Duncan 2nd Vice President and Kevin Baker 1st Vice-President were absent.

Treasurer's Report- Lynn said Daniela prepared the report she was going to read. The operating account has \$4604.83, legal has \$6130.59.

Secretary's Report- The minutes from the last meeting were printed in the newsletter that was mailed to all the residents, copies were available at the meeting and the minutes are posted on the web site. Chris had a correction to the printed minutes. In the original minutes that were emailed to board members Dan Weisberg from the Traffic Department had stated "From the west, heading east it is expected to be 20 cars in the morning and 150 cars per hour in the evening." Going around the roundabout from Jog Rd. and into PBCE. Somehow the number 20 was changed to 200 in the printed version. The correct number is 20. A motion was made and seconded to accept the minutes with the changes. Mike said the correction will be added to the website. **Guest Speakers** - State Rep. Carl Domino was introduced by Mike. Carl introduced his Senior District Legislative Aide Sheri Healy. He said if anyone had any questions to call his office at 561-625-5176. First Carl explained the different branches of legislative offices in the state of Florida. He said if

JEFF STROBEL

AIR CONDITIONING

All Your Cooling & Heating Needs

561-748-4553

WE SERVICE AND INSTALL ALL
MAKES AND MODELS
RESIDENTIAL - COMMERCIAL
SAME DAY SERVICE AVAILABLE
ALL MAJOR CREDIT CARDS ACCEPTED



TRANE

It's Hard To Stop A Trane®

Amana®

A.O. Smith
Water Heaters

JEFF STROBEL GAS ENERGY

Call us at 561-748-4553

**For all your gas appliance needs:
Generators, pool heaters, water heaters, and
tankless water heaters**

INSURED AND LICENSED - CAC058451 and LP21949
Have a cool day!

Min Cont. 11-13-07 one of the most important jobs while they are in session is creating a balanced budget and every 10 years they have to redistrict. He said there are also a series of delegation meetings. If anyone has an issue they would like heard all you have to do is call his office and you will be given 3 minutes to speak to the delegation on any issue you want. He said there is a series of these meeting in November, December and January. Then in January the committees meet in Tallahassee. The next issue was insurance, particularly wind-storm insurance. He said since the last hurricanes and the cost from the damage those storms caused, it's almost impossible to solve the issue. He said hurricanes are one of the most destructive disasters. He said the cost of the recent fires in California was estimated at \$500 million to \$1 billion and about 15 years ago there was an earthquake in San Francisco, which damaged the freeways there, that cost about \$2 billion. Our series of hurricanes over the two years cost about \$60 billion. Of that \$40 billion was insured and had to be reimbursed. He said because of their reform package insurance companies can't force you to carry windstorm insurance. The only problem with that is if you have a mortgage the mortgage company can force you to carry wind-storm. He said they made Citizens Insurance the insurance company of first resort rather than the last resort. This way everyone should be able to afford insurance. He also said even though they made significant changes, which should have lowered insurance rates the rates still raised. He said even more worrisome to them is some of the larger companies just won't even write insurance for Florida or the coast. He said they have investigated the insurance companies, they have turned down numerous rate hike requests and even frozen the rate for Citizens two years in a row. He said there is a push for a national catastrophic fund, which would match state funds and this, should

Sandhill Realty INC.



When you are ready to buy or sell, call the agency that specializes in the north county.

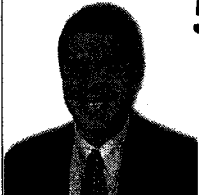
FULL SERVICE LISTINGS STILL AT 4% COMMISSION.

BUYERS: ASK ABOUT OUR FREE JOHN DEERE LAWN TRACTOR AT CLOSING!

561-626-4978

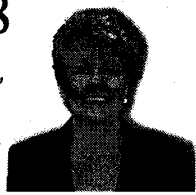
To see all PBCE MLS listings, go to our website:

www.sandhillrealty.com



Michael Danchuk
REALTOR®
CELL 561-339-3485

312 S. Old Dixie Hwy.
Suite 201
Jupiter, FL 33458



Nicole Campbell
LICENSED BROKER-OWNER
CELL 561-339-0469

Guy DiVosta's

TRENDEX HOME CORP.

Continuing his family's tradition of excellence.

CUSTOM SUPERIOR QUALITY

NEW HOMES - ADDITIONS

561-575-HOME (4663)

BUILDING CERTIFIED GREEN HOMES



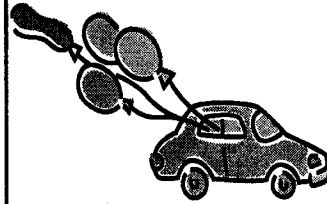
Custom Homes - Remodels
Garages
Guest Houses - Pool Cabanas
Mother-in-Law Suites
Driveways

Call for Free Consultation - (561) 575-7565

www.woodland-enterprises.com

PBCE Car - Motorcycle Show

May 4, 2008



Please contact **Scott Rice** 723-5552 or **Michael Danchuk** 339-3485 for more information on showing your favorite toys. Trophies will be awarded in several categories. Food will be available.

Bring your exotic, your antique or favorite car or motorcycle. Let your neighbors see that special ride.



Peter Muirhead

Juno Beach Tire and Auto Center
13841 U.S. Highway One, Juno Bch, FL 33408
(561) 624-2211 Fax: (561) 624-4669
Email: junotire@bellsouth.net

GOODYEAR
PBCE RESIDENT SINCE 92'
ASK ABOUT THE PBCE DISCOUNT

All PUMPS & WATER Inc.

- Pump Repair & Installation
- House, Pool & Sprinkler Pumps
- Pressure Tanks & Well Repair
- Water Softeners • Iron Filters
- Odor Filters • Drinking Water Systems
- Monthly Service • Bacteria & Water Testing

EMERGENCY SERVICE AVAILABLE

746-5664

Lic. # 2006-10071



RoomService Pet Sitting LLC
Serving North Palm Beach County

16182 127th Drive North
Jupiter, FL 33478

561-603-4392
Fax/ 561-743-5427
www.RoomServicePets.com
info@RoomServicePets.com



Min. Cont. 11-13-07 make the insurance companies feel safer and maybe they could lower their rates. Insurance has been a very frustrating issue for the legislature he said and that they had basically done almost everything they can do. The other issue is property taxes. On January 29th, along with the presidential primary you will also be able to vote on property tax reform. He said there have been two special sessions. The first one he became a bit of an outcast in his party because he voted to keep Save Our Homes, which caps the increase on your taxes to 3% per year. Portability is also something they are working on. The last issue is the state budget. The state budget in the first session was \$74 billion. \$30 billion comes from sales taxes, and the rest comes from local tax revenues and state tax revenues and matching funds. He said the largest amount of money spent goes to education with includes K-12 grades and state colleges. The second largest amount goes to health care and most of that goes to Medicaid. Most of the money spent on Medicaid is used for prescription drugs. He said due to slow home sales and lower tourist numbers they had a shortfall of money coming into the state so the governor vetoed some of the things the lawmakers wanted to spend money on so they had to go back for a special session to create a new budget. He said they cut about \$1 billion from the first budget. He invited anyone to come up and see the state capital and possibly meet some of the legislators. He also mentioned the messenger and page programs for the kids, 12-14 for a page and 15-18 for a messenger. Kids from all over the state participate and Carl said it is really a good thing to have on a college resume. A resident wanted to point out that we were having a hard time getting the sound walls approved until someone contacted Carl's office and then some how we were approved. He just wanted to thank Carl for the help. The resident also wanted to ask Carl about the tax reform vote coming up. He said he has heard that people say they are going to vote against the reform because they feel it's not enough. With the intention of sending a message that the people want more of a reform. Carl said he feels any type of a reform is a step forward and the Portability issue is very important and should be passed. He also feels that if people vote down the proposal the newspapers may see it, as the people don't want tax reform. A resident asked about the portability. it were voted in it would be retroactive to January 2007. He said if the proposal were voted in it would also include the \$300 property tax saving for everyone regardless if you plan on moving and using the portability. Another resident asked about what was being built in the Abacoa area regarding Scripps and Max Plank. He wanted to know what other things were going to be built. Carl said Scripps and Max Planck have to become established and gain grants for other businesses to move in. He said it wouldn't be the bio-cluster that was originally planned. Some businesses may locate in other parts of the area but it will still bring in more business. Mike said he wanted to thank Carl and Sheri for being one of the most assessable State Reps he has ever worked with. He also wanted to mention that Carl was instrumental in getting the law passed where you don't have to carry windstorm insurance if you choose not to. He also said Carl has really pushed for the portability issue. A resident asked about a personal income tax. Carl said he would never allow that to happen. He doesn't feel it would work well in Florida because we are such a transient state. He feels we need to look at other sources of revenue. For example, the Seminole Indian casinos. If they are allowed to use casino style slot machine he feels the state should get a part of that income. A resident asked what other businesses the state is trying to attract. Carl said there were some sports franchises as well as the NASCAR Hall of Fame. He also said there also has been talk about ethanol produced from sugarcane in conjunction with FPL. Carl said Florida would be a good choice for solar or wind. Mike thanked Carl and Sheri for coming. **Old Business: Roads** -Mike said

Min. Cont. 11-13-07 he did get a few calls where residents were interested in paving their own roads but that hasn't progressed from there. There is going to be a meeting at the water control district and the engineers had some new estimates. They are also getting ready to do the Soiltac test behind the district shop. **Park/Playground** - Chris said the next Clean-up/Work Day was December 1st and the new build date was the last week in February. February 25-March 1 2009. Mike said the park is moving along. There has been clearing done, surveys have been done; estimates for the perimeter fence have been done. He said in the last newsletter we are looking for donations for the fence. We are going to use black chain link. Sponsors for each side of the fence at \$2500 each are being solicited. You will get a plaque with your name or company name on it. A resident asked how much funds were in the playground/park fund. Chris said she didn't have the exact number but there was approximately \$5000. Chris also asked if anyone had a front-end loader to help pull stumps during the December clean up. A resident asked about who will maintain the park and why chain link was picked rather than split rail, which would be cheaper. The water control district will maintain the park and it was a safety issue regarding the fence. Children could crawl through the split rail and with the canal behind the park we want to make sure that doesn't happen. Chris said the playground would actually have its own fence. The playground committee is selling pickets for the perimeter playground fence with an inscription of your choice engraved on the picket. For a donation you can purchase an engraved picket, engraved brick, playground component or have your name or business name on the donor board. The website is Twistypinesplayground.org. **New Business:** - Mike said he has gotten some phone calls about break-ins and things being taken out of cars and sheds. A resident said she lives on 72nd and 155th and a number of cars had been vandalized. Chris said at the schools cars are also being broken into.

A resident said she saw a man digging dirt from the road and putting it in a wheelbarrow and bringing it back to his house. She asked if we could put something in the newsletter about buying your own dirt and don't steal it from the road. She wanted to know what she should have done? Should she say something to him or call someone. Someone spoke up and said next time call the police. This could cause washouts or potholes. He said don't be afraid to call the Sheriff if you see someone doing something wrong. Another resident asked if the graders could come the day after the garbage trucks. She said it always seems the graders come before the trucks and after that the roads are in bad shape. Another resident asked about the dirt the water contractor is moving onto the roads, covering the shell rock. Mike said he would mention it to Gale at the water district. Mike said he got a great result from having his home inspected and got a discount on his windstorm insurance. He said he used Janero, who lives in the neighborhood. Someone else asked about the swales being redone and reseeded. They are only sodding around the culverts that are washing in. Bob Berman said there is some disagreement between the contractor and the water district about how much restoration the contractor is required to do. Bob said after the water project is entirely done the water district is going to go through and redo most if not all of the swales.

Mike asked if there were any new neighbors. There were none. He asked if there were any more questions. Bob spoke up and said if anyone wanted to look at the most current engineer report he has it at his office.

A motion was made to close the meeting. Motion was seconded. Meeting ended at 8:50pm.

Respectfully submitted, *Chris Reinhardt*

**Donald Ross Landowners Association Meeting
January 15**

Meeting was called to order at 7:38pm

Mike Danchuk, President, called the meeting to order. Board Officers Kevin Baker, 1st Vice President and Chris Reinhardt, Secretary were present. Board Officers Stephanie Duncan, 2nd Vice-President and Lynn Home, Treasurer were absent. **Treasurer's Report-** No report. **Secretary's Report-** Chris was running late. No Secretary's report. Mike said the minutes would be posted on the website. **Old Business: Roads –** The water district is going to test the Soiltac soil stabilizer on the road behind the SIRWCD office in Jupiter Farms soon. The manufacturer is going to supply the materials for free for the test. This road is the most heavily traveled road at this time, with large trucks working on the OGEM project in Jupiter Farms. That is why they decided to try this road first. Also, because the engineers are there along with the SIRWCD employees who can monitor the road more closely there. If it fails on this road they still might try it on a regularly traveled road as a comparison. A resident asked what he could do about his swales and culvert filling in with sand after it rains. Mike said if the culvert is blocked call Gale English at the water district and they will bring in the large backhoe to clear the swale and culvert but if the culvert has collapsed it's the owners responsibility. He also said some residents don't like the large backhoe being used on their property because they have sodded their swales and the machine will tear it up. Mike said that's why they are looking at the Soiltac as a solution to prevent this from happening. A resident had a copy of the SIRWCD newsletter and he wanted to know why their budget had gone up so much. Mike said the water project and the OGEM paving in Jupiter Farms is mostly the reason why. The resident said according to the SIRWCD newsletter the paving was the main increase. He wanted to know if we were going to be taxed on this. Mike said no because even though PBCE and Jupiter Farms are both under SIRWCD we are still taxed separately. A resident asked if the engineers are still looking into paving prices for PBCE. Mike said he talked to them and he said they are still looking into it. They are trying to get a reduction in price. A resident said after his road was graded there is a layer of sand from the water pipes being buried. He wanted to know if they were planning on putting shell rock down to cover it up. Mike said this has been discussed at the meetings at the water control district. Mike said if they brought in shell rock it would cost everyone more money. A resident asked about the gouges the loaders have made in some paved roads. Mike said he has already talked to Brandy from the water contractor's office about the situation. Mike said they are going to have to fix it. He said if you have a problem email the PBCE website so we can keep up with them and get them resolved.

Janero
Construction & Services, Inc.
Pools

Jupiter Commerce Park
1445 Jupiter Park Drive, Suite 5
Jupiter, Florida 33458
Telephone 561.427.6113
Facsimile 561.427.6115
Janeropools.com



Estate Pools, Spas and Fountains
License #116987

REFINANCE • CASH OUT • PURCHASE • REHAB LOANS

**Great Rates!
Great Service!**



Call for a FREE Consultation

Mike Lay
Loan Officer
561-628-4061
mikelay@bellsouth.net



INVESTMENT PROPERTY • CONSTRUCTION LOANS

**Interested in saving money on your
HOME OWNERS INSURANCE POLICY?**

**I can provide you with a certified
windstorm survey.**

Call Chris Janero for more information.
Janero Construction & Services, Inc.
561-427-6113 or 561-743-3747
License: CGC028614

**Twisty Pines
Playground in PBCE**

**Together We
Can Do It!**

**Volunteers
Needed!**

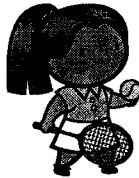
To Volunteer
Make A Donation
Or For More
Information Call
Wendy 745-9859 or
Bill or Judy 745-6632
www.twistypinesplayground.org

Tennis Lessons

Adults & Children
All Abilities Welcome!



Private/Semi-Private lessons available
or bring your own Group!



Call today to schedule your time!!
Don't Miss the Fun!
Space is Limited!



USPTA Certified Professionals

Tara & Mike Puc 743-7591
15729 81st Terrace North
Palm Beach Gardens

GILLESPIE PLUMBING

WATER SERVICES
CONNECT TO CITY WATER
WATER HEATERS, FAUCETS, DISPOSALS

PALM BEACH COUNTRY ESTATES
RESIDENT - 24 YEARS

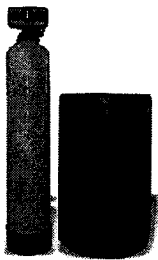
LICENSE #: CFC037081
LICENSED AND INSURED
STATE CERTIFIED

561-339-6135

561-339-9269



25% off for Palm Beach County Estates Neighbors



**Water Filtration
Systems
Sales and Service**

- * Water Softener
- * Reverse Osmosis
- * Pumps and Tanks
- * Salt Delivery
- * Monthly Service
- * Odor and Iron Removal



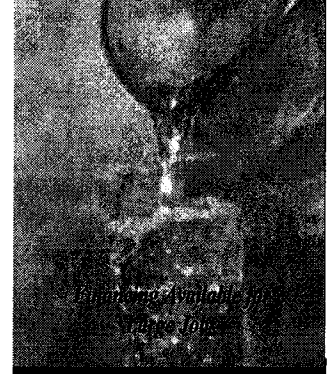
City water is on the way, but what do you do today?
Call us for more details.
561-732-9552

ENTERPRISE
Plumbing Service
of Jupiter, Inc.

Family Owned Since 1984

*"Original"
The Clean
Plumbers*

Are You Ready for
City Water?



Call Today For a Free Estimate

561-744-7540
Ask for Jen



#CFC019104
LP#4794



Our Owner is a resident of
PBCE and understands your
questions and concerns

ATS

Accurate Tax Services, Inc.

**Kerry Mercatante
Enrolled Agent**

20Years Experience

Palm Beach Gardens/Jupiter

561-748-3271

Boca/Delray/Boynton

561-272-6600

WELLS FARGO HOME MORTGAGE

Carol Grasso
Home Mortgage Consultant
Reverse Mortgages

Wells Fargo Home Mortgage

825 US Highway One
Suite 240
Jupiter, FL 33477
561 741-8242 Office
561 747-7099 Fax
561 459-7065 Cell
866 881-9804 ext. 1015 Toll Free
carol.grasso@wellsfargo.com



BOBCAT JOE
Loader and Backhoe Service

JOE SCOTTEN
Cell (561) 722-6081
(561) 747-3286

Service & Repairs

**10452 Sandy Run Rd.
Jupiter, FL 33478**

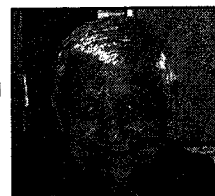
2008 Dues Are Due

If you have not yet paid your 2008 dues please do so and support your community. Please issue payment of \$35.00 to the:

Donald Ross Landowners Association
P.O. Box 30638,
Palm Beach Gardens, FL 33420

GENERAL GMC TRUCK

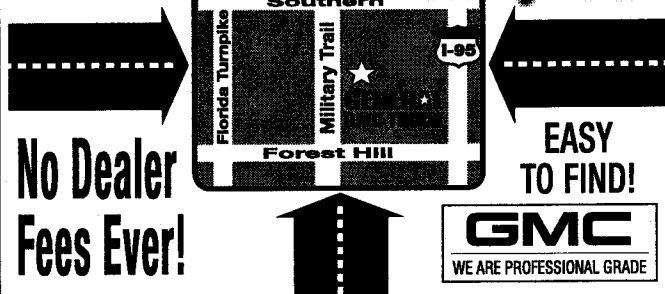
ALL ROADS LEAD TO GENERAL!



Mike Marshall
Sales Manager

No Dealer Fees Ever!

Your Friend & Neighbor In Palm Beach Country Estates.



No Dealer Fees Ever!

EASY TO FIND!



360 South Military Trail, West Palm Beach

1-561-686-8906 • 1-877-248-0346

Sale Hours: Mon.-Thur.: 9am-7pm • Friday: 9am-6pm • Saturday: 9am-6pm
Shop Us 24/7 at www.generalgmc.com • Hablamos Español!
Every New Truck Is Delivered With A Full Tank Of Gas!

South Indian River Water Control District

Cordially invites you to attend the

17th Annual

Landowners Family Day

*Jupiter * Palm Beach Country Estates*

*Egret Landing * Jupiter Commerce Park*

~ Saturday, March 15, 2008 ~

11 a.m. to 3 p.m.

At the District Work Center

15600 Jupiter Farms Road, Jupiter

Enjoy Barbeque & Live Music

Meet the Supervisors & Staff

See Community Exhibits & Displays

Fun for the Kids!

~

RSVP to Greta Rayman at 747-0550