

Countryside Living...

A PERIODIC PUBLICATION OF THE DONALD ROSS LANDOWNERS ASSOCIATION, INC.



Park Cleanup Continues

Extensive clearing of the dense Palm Beach Country Estates Community Park is continuing. The non-native vegetation is being removed and carted away. Expenses are being borne by the PBCE

Landowners Association and the Twisty Pine Playground Association. Expect to see in the near future fencing going up around the perimeter and landscaping being started to replace the vegetation. Volunteers again helped on December 1st, but much of the work is now being completed by heavy equipment.

We still need at least two more sponsors for the fence at \$2,500. Steve and Shari Murray of Municipal Technologies have already donated one section and Bob Berman has offered to pay for the Areca Palms that will be put along the fence on the southern border to shield the park from adjoining neighbors.

Also a big thank you to Denny of Big D Paving for his assistance with clearing with the heavy equipment that he has been doing.

AT&T Will Move Boxes

For several years the Landowners Association and SIRWCD have been talking to Bell South and AT&T about their two switching boxes located at the corner of 75th Avenue and 155th Place in Palm Beach Country Estates. The concern was that vehicles heading south on 75th Avenue had their vision of west-bound vehicles approaching on 155th Place blocked from view.

Michael Danchuk from the Landowners Association had sent photos with the correspondence showing the problems we felt were occurring. We are happy to report that Gale English of SIRWCD in recent discussions with AT&T had come to an agreement and was advised that AT&T will voluntarily move the boxes to the north east corner of the canal and 75th just south of 155th. This is land under control of SIRWCD and the move will eliminate the concerns our community had with the intersection. The transfer should be completed within the near future.

Donald Ross/ Jog Road Connection

Currently per Kathleen Farrell, of the County road department, bidding is scheduled for February 2008, and construction may start as early as April 2008. For those unfamiliar with the project the County is having two traffic roundabouts placed at the end of Donald Ross Road. The first roundabout will connect to 69th Drive. And the second will be just west of 69th drive and connect south to Jog Road and the Mirasol development. There will be sidewalks built on both sides of Donald Ross Road, and on the east side of 69th Drive. With the new elementary school being built in Mirasol the connection will make it easier for PBCE residents to get to our new school, as well as provide another exit if the I-95 interchange is ever blocked.

Officers and Committee Members

Officers:

President - Michael Danchuk	626-2530
1st Vice President - Kevin Baker	748-3376
2nd Vice President - Stephanie Duncan	575-7956
Treasure - Lynn Horne	748-5042
Secretary - Chris Reinhardt	743-8725

Committees:

COP Patrol & Disaster Assistance- Bill Bolds	626-7638
Entrance - Kirk Humphreys	748-4595
Beautification - Valerie Rozzo	743-3290
Car Shows - Scott Rice	723-5552
Helping Hands - Pam Malone	743-9912
Newsletter Editor/Advert. - Nicole Campbell	626-2530
Welcoming - Arie Strobel	748-6784
Sidewalks - Mike Danchuk	626-2530
Mom's Club - Sara Nakashian	748-7744
Disaster Response Team - Bill Bolds	626-7638
Parks - Bill Meyers	745-6632
Bob Berman	627-1118
Kirk Humphreys	748-4595
Chris Reinhardt	743-8725
Tim Brown	748-0709

Information:

Equestrian - Beverly Bean	575-4411
bbeaninc@bellsouth.net	
RV/Camping Club - Connie McCormick	744-2938
SIRWCD - www.sirwcd.org	747-0550
Landowners Association - www.myPBCE.org	
Park - www.twistypinesplayground.org	

Mirasol Elementary

A new principal has been assigned to the soon to be opened Mirasol Elementary School for the 2009 school year. She is Maureen Werner of Limestone Creek Elementary. There is going to be a "Meet and Greet" at the Mirasol school Wednesday, February 20 at 6:30pm in the cafeteria. Current students at Lighthouse and Beacon Cove were sent a letter from her regarding this meeting. Parents of small children who are not currently enrolled in school and will be affected by this change should also attend the meeting to meet the new principal and get information on the new school.



Message from the President

We are starting another new year. A lot has happened in 2007. Several items I felt very strongly about and supported are moving along. Scripps has become a reality, even the nay-sayers and those that wanted it built somewhere else, are now agreeing that it will be good for our community and the north county. The sound walls that allegedly could not be built because of our low density, have been approved, and will eventually be put up alongside of our eastern borders. For those seeking city water it is now here, should be completed soon, and many of our residents are already hooked up. The park is finally getting built as land is cleared, donations are coming in, and soon we will see fencing and landscaping start. Meanwhile our western borders are protected by state, and county land preserves. These things did not just happen, but were achieved by strong volunteer support and efforts by our Association.

I feel our community is well protected from negative development and impacts around us and our Association is strong. Therefore I have decided not to run for reelection as President this May. I feel it is a good time to get new people involved, and hopefully we will have interested residents step up and run for the positions that will be open.

In the upcoming new year I feel the Association will have to work towards getting the park done, monitor the Jog/Donald Ross connection, and follow up on getting the sidewalk/pathways installed as have been promised. Security will be an issue as more people move into the north county, and we will likely need to be pro actively involved. But most importantly we must continue to be unified while having fun, so Palm Beach Country Estates will always be the best place to live in northern Palm Beach County.

Michael Danchuk-President

Donald Ross Landowners Association Meeting November 13, 2007

11-13-07 - Meeting was called to order at 7:32pm Mike Danchuk, President, called the meeting to order. Mike introduced Lynn Home our new Treasurer. Daniela Russell decided not to run at the last election but stayed on until Lynn was able to take over. Daniela will continue to do the tax returns for the Association while Lynn will do the day-to-day business. Mike wanted to thank Daniela for all she has done for the Association. Also present was Chris Reinhardt Secretary. Board Officers, Stephanie Duncan 2nd Vice President and Kevin Baker 1st Vice-President were absent.

Treasurer's Report- Lynn said Daniela prepared the report she was going to read. The operating account has \$4604.83, legal has \$6130.59.

Secretary's Report- The minutes from the last meeting were printed in the newsletter that was mailed to all the residents, copies were available at the meeting and the minutes are posted on the web site. Chris had a correction to the printed minutes. In the original minutes that were emailed to board members Dan Weisberg from the Traffic Department had stated "From the west, heading east it is expected to be 20 cars in the morning and 150 cars per hour in the evening." Going around the roundabout from Jog Rd. and into PBCE. Somehow the number 20 was changed to 200 in the printed version. The correct number is 20. A motion was made and seconded to accept the minutes with the changes. Mike said the correction will be added to the website. **Guest Speakers** - State Rep. Carl Domino was introduced by Mike. Carl introduced his Senior District Legislative Aide Sheri Healy. He said if anyone had any questions to call his office at 561-625-5176. First Carl explained the different branches of legislative offices in the state of Florida. He said if

JEFF STROBEL

AIR CONDITIONING

All Your Cooling & Heating Needs

561-748-4553

WE SERVICE AND INSTALL ALL
MAKES AND MODELS
RESIDENTIAL - COMMERCIAL
SAME DAY SERVICE AVAILABLE
ALL MAJOR CREDIT CARDS ACCEPTED



TRANE

It's Hard To Stop A Trane®

Amana®

A.O. Smith

Water Heaters

JEFF STROBEL GAS ENERGY

Call us at 561-748-4553

**For all your gas appliance needs:
Generators, pool heaters, water heaters, and
tankless water heaters**

INSURED AND LICENSED - CAC058451 and LP21949
Have a cool day!

Min Cont. 11-13-07 one of the most important jobs while they are in session is creating a balanced budget and every 10 years they have to redistrict. He said there are also a series of delegation meetings. If anyone has an issue they would like heard all you have to do is call his office and you will be given 3 minutes to speak to the delegation on any issue you want. He said there is a series of these meeting in November, December and January. Then in January the committees meet in Tallahassee. The next issue was insurance, particularly wind-storm insurance. He said since the last hurricanes and the cost from the damage those storms caused, it's almost impossible to solve the issue. He said hurricanes are one of the most destructive disasters. He said the cost of the recent fires in California was estimated at \$500 million to \$1 billion and about 15 years ago there was an earthquake in San Francisco, which damaged the freeways there, that cost about \$2 billion. Our series of hurricanes over the two years cost about \$60 billion. Of that \$40 billion was insured and had to be reimbursed. He said because of their reform package insurance companies can't force you to carry windstorm insurance. The only problem with that is if you have a mortgage the mortgage company can force you to carry wind-storm. He said they made Citizens Insurance the insurance company of first resort rather than the last resort. This way everyone should be able to afford insurance. He also said even though they made significant changes, which should have lowered insurance rates the rates still raised. He said even more worrisome to them is some of the larger companies just won't even write insurance for Florida or the coast. He said they have investigated the insurance companies, they have turned down numerous rate hike requests and even frozen the rate for Citizens two years in a row. He said there is a push for a national catastrophic fund, which would match state funds and this, should

Sandhill Realty INC.



When you are ready to buy or sell, call the agency that specializes in the north county.

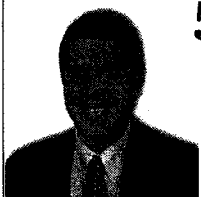
FULL SERVICE LISTINGS STILL AT 4% COMMISSION.

BUYERS: ASK ABOUT OUR FREE JOHN DEERE LAWN TRACTOR AT CLOSING!

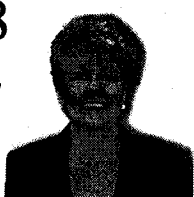
561-626-4978

To see all PBCE MLS listings,
go to our website:

www.sandhillrealty.com



Michael Danchuk
REALTOR®
CELL 561-339-3485

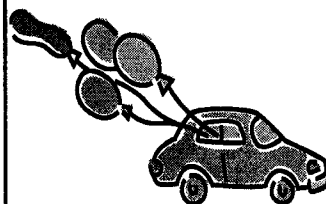


Nicole Campbell
LICENSED BROKER-OWNER
CELL 561-339-0469

312 S. Old Dixie Hwy.
Suite 201
Jupiter, FL 33458

PBCE Car - Motorcycle Show

May 4, 2008



Please contact Scott Rice 723-5552 or Michael Danchuk 339-3485 for more information on showing your favorite toys. Trophies will be awarded in several categories. Food will be available.

Bring your exotic, your antique or favorite car or motorcycle. Let your neighbors see that special ride.



Peter Muirhead

Juno Beach Tire and Auto Center

13841 U.S. Highway One, Juno Bch, FL 33408
(561) 624-2211 Fax: (561) 624-4669
Email: junotire@bellsouth.net

GOODYEAR

PBCE RESIDENT SINCE 92
ASK ABOUT THE PBCE DISCOUNT

Guy DiVosta's

TRENDEX HOME CORP.

Continuing his family's tradition of excellence.

CUSTOM SUPERIOR QUALITY

NEW HOMES - ADDITIONS

561-575-HOME (4663)

BUILDING CERTIFIED GREEN HOMES

All PUMPS & WATER Inc.

- Pump Repair & Installation
- House, Pool & Sprinkler Pumps
- Pressure Tanks & Well Repair
- Water Softners • Iron Filters
- Odor Filters • Drinking Water Systems
- Monthly Service • Bacteria & Water Testing

EMERGENCY SERVICE AVAILABLE

746-5664

Lic. # 2006-10071



Custom Homes - Remodels

Garages

Guest Houses - Pool Cabanas

Mother-in-Law Suites

Driveways

Call for Free Consultation - (561) 575-7565

www.woodland-enterprises.com



RoomService Pet Sitting LLC
Serving North Palm Beach County

16182 127th Drive North
Jupiter, FL 33478

561-603-4392

Fax: 561-743-5427

www.RoomServicePets.com
info@RoomServicePets.com

Min. Cont. 11-13-07 make the insurance companies feel safer and maybe they could lower their rates. Insurance has been a very frustrating issue for the legislature he said and that they had basically done almost everything they can do. The other issue is property taxes. On January 29th, along with the presidential primary you will also be able to vote on property tax reform. He said there have been two special sessions. The first one he became a bit of an outcast in his party because he voted to keep Save Our Homes, which caps the increase on your taxes to 3% per year. Portability is also something they are working on. The last issue is the state budget. The state budget in the first session was \$74 billion. \$30 billion comes from sales taxes, and the rest comes from local tax revenues and state tax revenues and matching funds. He said the largest amount of money spent goes to education with includes K-12 grades and state colleges. The second largest amount goes to health care and most of that goes to Medicaid. Most of the money spent on Medicaid is used for prescription drugs. He said due to slow home sales and lower tourist numbers they had a shortfall of money coming into the state so the governor vetoed some of the things the lawmakers wanted to spend money on so they had to go back for a special session to create a new budget. He said they cut about \$1 billion from the first budget. He invited anyone to come up and see the state capital and possibly meet some of the legislators. He also mentioned the messenger and page programs for the kids, 12-14 for a page and 15-18 for a messenger. Kids from all over the state participate and Carl said it is really a good thing to have on a college resume. A resident wanted to point out that we were having a hard time getting the sound walls approved until someone contacted Carl's office and then some how we were approved. He just wanted to thank Carl for the help. The resident also wanted to ask Carl about the tax reform vote coming up. He said he has heard that people say they are going to vote against the reform because they feel it's not enough. With the intention of sending a message that the people want more of a reform. Carl said he feels any type of a reform is a step forward and the Portability issue is very important and should be passed. He also feels that if people vote down the proposal the newspapers may see it, as the people don't want tax reform. A resident asked about the portability. it were voted in it would be retroactive to January 2007. He said if the proposal were voted in it would also include the \$300 property tax saving for everyone regardless if you plan on moving and using the portability. Another resident asked about what was being built in the Abacoa area regarding Scripps and Max Plank. He wanted to know what other things were going to be built. Carl said Scripps and Max Planck have to become established and gain grants for other businesses to move in. He said it wouldn't be the bio-cluster that was originally planned. Some businesses may locate in other parts of the area but it will still bring in more business. Mike said he wanted to thank Carl and Sheri for being one of the most assessable State Reps he has ever worked with. He also wanted to mention that Carl was instrumental in getting the law passed where you don't have to carry windstorm insurance if you choose not to. He also said Carl has really pushed for the portability issue. A resident asked about a personal income tax. Carl said he would never allow that to happen. He doesn't feel it would work well in Florida because we are such a transient state. He feels we need to look at other sources of revenue. For example, the Seminole Indian casinos. If they are allowed to use casino style slot machine he feels the state should get a part of that income. A resident asked what other businesses the state is trying to attract. Carl said there were some sports franchises as well as the NASCAR Hall of Fame. He also said there also has been talk about ethanol produced from sugarcane in conjunction with FPL. Carl said Florida would be a good choice for solar or wind. Mike thanked Carl and Sheri for coming. **Old Business: Roads** -Mike said

Min. Cont. 11-13-07 he did get a few calls where residents were interested in paving their own roads but that hasn't progressed from there. There is going to be a meeting at the water control district and the engineers had some new estimates. They are also getting ready to do the Soiltec test behind the district shop. **Park/Playground** - Chris said the next Clean-up/Work Day was December 1st and the new build date was the last week in February. February 25-March 1 2009. Mike said the park is moving along. There has been clearing done, surveys have been done; estimates for the perimeter fence have been done. He said in the last newsletter we are looking for donations for the fence. We are going to use black chain link. Sponsors for each side of the fence at \$2500 each are being solicited. You will get a plaque with your name or company name on it. A resident asked how much funds were in the playground/park fund. Chris said she didn't have the exact number but there was approximately \$5000. Chris also asked if anyone had a front-end loader to help pull stumps during the December clean up. A resident asked about who will maintain the park and why chain link was picked rather than split rail, which would be cheaper. The water control district will maintain the park and it was a safety issue regarding the fence. Children could crawl through the split rail and with the canal behind the park we want to make sure that doesn't happen. Chris said the playground would actually have its own fence. The playground committee is selling pickets for the perimeter playground fence with an inscription of your choice engraved on the picket. For a donation you can purchase an engraved picket, engraved brick, playground component or have your name or business name on the donor board. The website is Twistypinesplayground.org. **New Business:** - Mike said he has gotten some phone calls about break-ins and things being taken out of cars and sheds. A resident said she lives on 72nd and 155th and a number of cars had been vandalized. Chris said at the schools cars are also being broken into.

A resident said she saw a man digging dirt from the road and putting it in a wheelbarrow and bringing it back to his house. She asked if we could put something in the newsletter about buying your own dirt and don't steal it from the road. She wanted to know what she should have done? Should she say something to him or call someone. Someone spoke up and said next time call the police. This could cause washouts or potholes. He said don't be afraid to call the Sheriff if you see someone doing something wrong. Another resident asked if the graders could come the day after the garbage trucks. She said it always seems the graders come before the trucks and after that the roads are in bad shape. Another resident asked about the dirt the water contractor is moving onto the roads, covering the shell rock. Mike said he would mention it to Gale at the water district. Mike said he got a great result from having his home inspected and got a discount on his windstorm insurance. He said he used Janero, who lives in the neighborhood. Someone else asked about the swales being redone and reseeded. They are only sodding around the culverts that are washing in. Bob Berman said there is some disagreement between the contractor and the water district about how much restoration the contractor is required to do. Bob said after the water project is entirely done the water district is going to go through and redo most if not all of the swales.

Mike asked if there were any new neighbors. There were none. He asked if there were any more questions. Bob spoke up and said if anyone wanted to look at the most current engineer report he has it at his office.

A motion was made to close the meeting. Motion was seconded. Meeting ended at 8:50pm.

Respectfully submitted, *Chris Reinhardt*

**Donald Ross Landowners Association Meeting
January 15**

Meeting was called to order at 7:38pm

Mike Danchuk, President, called the meeting to order. Board Officers Kevin Baker, 1st Vice President and Chris Reinhardt, Secretary were present. Board Officers Stephanie Duncan, 2nd Vice-President and Lynn Home, Treasurer were absent. **Treasurer's Report**- No report. **Secretary's Report**- Chris was running late. No Secretary's report. Mike said the minutes would be posted on the website. **Old Business: Roads** - The water district is going to test the Soiltec soil stabilizer on the road behind the SIRWCD office in Jupiter Farms soon. The manufacturer is going to supply the materials for free for the test. This road is the most heavily traveled road at this time, with large trucks working on the OGEM project in Jupiter Farms. That is why they decided to try this road first. Also, because the engineers are there along with the SIRWCD employees who can monitor the road more closely there. If it fails on this road they still might try it on a regularly traveled road as a comparison. A resident asked what he could do about his swales and culvert filling in with sand after it rains. Mike said if the culvert is blocked call Gale English at the water district and they will bring in the large backhoe to clear the swale and culvert but if the culvert has collapsed it's the owners responsibility. He also said some residents don't like the large backhoe being used on their property because they have sodded their swales and the machine will tear it up. Mike said that's why they are looking at the Soiltec as a solution to prevent this from happening. A resident had a copy of the SIRWCD newsletter and he wanted to know why their budget had gone up so much. Mike said the water project and the OGEM paving in Jupiter Farms is mostly the reason why. The resident said according to the SIRWCD newsletter the paving was the main increase. He wanted to know if we were going to be taxed on this. Mike said no because even though PBCE and Jupiter Farms are both under SIRWCD we are still taxed separately. A resident asked if the engineers are still looking into paving prices for PBCE. Mike said he talked to them and he said they are still looking into it. They are trying to get a reduction in price. A resident said after his road was graded there is a layer of sand from the water pipes being buried. He wanted to know if they were planning on putting shell rock down to cover it up. Mike said this has been discussed at the meetings at the water control district. Mike said if they brought in shell rock it would cost everyone more money. A resident asked about the gouges the loaders have made in some paved roads. Mike said he has already talked to Brandy from the water contractor's office about the situation. Mike said they are going to have to fix it. He said if you have a problem email the PBCE website so we can keep up with them and get them resolved.

Janero
Construction & Services, Inc.
Pools



Jupiter Commerce Park
1445 Jupiter Park Drive, Suite 5
Jupiter, Florida 33458
Telephone 561.427.6113
Facsimile 561.427.6115
Janeropools.com

Estate Pools, Spas and Fountains
License #116987

• REFINANCE • CASH OUT • PURCHASE • REHAB LOANS •

**Great Rates!
Great Service!**



Call for a **FREE** Consultation!

Mike Lay
Loan Officer

561-628-4061

mikelay@bellsouth.net



• INVESTMENT PROPERTY • CONSTRUCTION LOANS •

**Interested in saving money on your
HOME OWNERS INSURANCE POLICY?**

**I can provide you with a certified
windstorm survey.**

Call Chris Janero for more information.

Janero Construction & Services, Inc.

561-427-6113 or 561-743-3747

License: CGC028614

**Twisty Pines
Playground in PBCE**

**Together We
Can Do It!**

**Volunteers
Needed!**

To Volunteer
Make A Donation
Or For More
Information Call

Wendy 745-9859 or

Bill or Judy 745-6432

www.TwistyPinesPlayground.org

Tennis Lessons

Adults & Children
All Abilities Welcome!



Private/Semi-Private lessons available
or bring your own Group!



Call today to schedule your time!!
Don't Miss the Fun!
Space is Limited!



USPTA Certified Professionals

Tara & Mike Puc 743-7591
15729 81st Terrace North
Palm Beach Gardens

GILLESPIE PLUMBING

WATER SERVICES
CONNECT TO CITY WATER
WATER HEATERS, FAUCETS, DISPOSALS

PALM BEACH COUNTRY ESTATES
RESIDENT - 24 YEARS

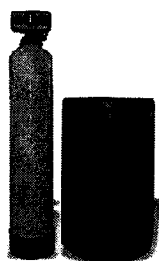
LICENSE #: CFC037081
LICENSED AND INSURED
STATE CERTIFIED

561-339-6135

561-339-9269



25% off for Palm Beach County Estates Neighbors



**Water Filtration
Systems
Sales and Service**

- * Water Softener
- * Reverse Osmosis
- * Pumps and Tanks
- * Salt Delivery
- * Monthly Service
- * Odor and Iron Removal

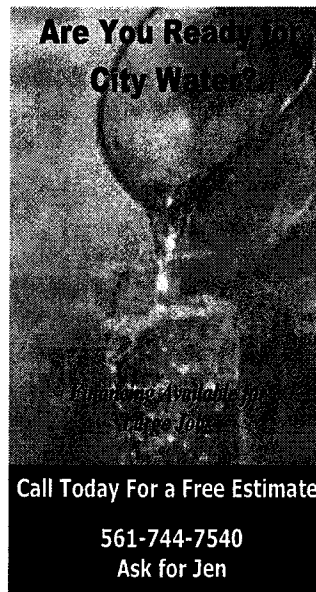


City water is on the way, but what do you do today?
Call us for more details.
561-732-9552

ENTERPRISE
Plumbing Service
of Jupiter, Inc.

Family Owned Since 1984

*"Original"
The Clean
Plumbers*



Call Today For a Free Estimate

561-744-7540
Ask for Jen



#CFC019104
LP#4794



Our Owner is a resident of
PBCE and understands your
questions and concerns

ATS

Accurate Tax Services, Inc.

**Kerry Mercatante
Enrolled Agent**

20Years Experience

Palm Beach Gardens/Jupiter

561-748-3271

Boca/Delray/Boynton

561-272-6600

**WELLS
FARGO**

**HOME
MORTGAGE**

Carol Grasso

**Home Mortgage Consultant
Reverse Mortgages**

Wells Fargo Home Mortgage

**825 US Highway One
Suite 240**

Jupiter, FL 33477

561 741-8242 Office

561 747-7099 Fax

561 459-7065 Cell

**866 881-9804 ext. 1015 Toll Free
carol.grasso@wellsfargo.com**



BOBCAT JOE

Loader and Backhoe Service

**JOE SCOTTEN
Cell (561) 722-6081
(561) 747-3286**

Service & Repairs

**10452 Sandy Run Rd.
Jupiter, FL 33478**

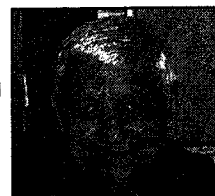
2008 Dues Are Due

If you have not yet paid your 2008 dues
please do so and support your community.
Please issue payment of \$35.00 to the:

**Donald Ross Landowners Association
P.O. Box 30638,
Palm Beach Gardens, FL 33420**

GENERAL GMC TRUCK

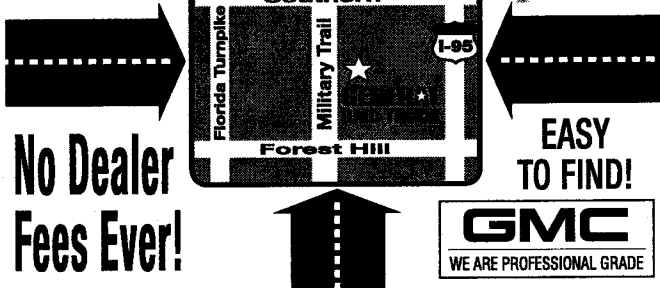
ALL ROADS LEAD TO GENERAL!



**Mike Marshall
Sales Manager**

**No Dealer
Fees Ever!**

**Your Friend
& Neighbor In
Palm Beach
Country Estates.**



**No Dealer
Fees Ever!**

**EASY
TO FIND!**

**GMC
WE ARE PROFESSIONAL GRADE**

360 South Military Trail, West Palm Beach

1-561-686-8906 • 1-877-248-0346

Sale Hours: Mon.-Thur.: 9am-7pm • Friday: 9am-6pm • Saturday: 9am-6pm

Shop Us 24/7 at www.generalgmc.com • Hablamos Español!

Every New Truck Is Delivered With A Full Tank Of Gas!

South Indian River Water Control District

Cordially invites you to attend the

17th Annual

Landowners Family Day

Jupiter * Palm Beach Country Estates

Egret Landing * Jupiter Commerce Park

~ Saturday, March 15, 2008 ~

11 a.m. to 3 p.m.

At the District Work Center

15600 Jupiter Farms Road, Jupiter

Enjoy Barbeque & Live Music

Meet the Supervisors & Staff

See Community Exhibits & Displays

Fun for the Kids!

~

RSVP to Greta Rayman at 747-0550

Min. Cont. 1-15-08 Park/Playground – Chris said we have had quite a bit of clearing done. We have a resident who borrowed a front-end loader from his work and he and his cousin have been clearing the park for two days. They have done a tremendous job. We also asked for donations of \$2500 for each of the four sides to the park fence. So far one resident, Steve and Shari Murray of Municipal Technologies has come forward to sponsor one section of the fence. They will receive a plaque at the entrance to the park for their donation. There are three sections left. This is a great tax write-off for your business. We also talked to the neighbor on the south side where most of the clearing has been done. Although the Brazilian Pepper/Florida Holly is non-native and had to be removed it was also a sound barrier for the Turnpike traffic for him. Bob Berman has offered to pay for a row of areca palms to help with noise suppression. Mike also wanted to thank Tim Brown for all his work on the park. He has been instrumental in finding volunteers and equipment to help with the park. He has also helped find haulers to remove the vegetative debris at a much cheaper rate than normal. Mike also wanted to thank Kirk Humphries for all his work. Chris also wanted to remind everyone we still need committee members. She said to check the playground website, www.twistypinesplayground.org for more information, but we do need someone for tools, food, and fundraising could use more people. We need to start getting the fundraising rolling. We plan on doing the build the last week in February 2009. The dates are Feb 25-March 1. We did ask the Town of Jupiter to wave the water hookup fees and they said they couldn't. They said they even charge themselves when a town building is built. We are still having the meter put in and the paper work is being filled out. We are also still going to put in a well for irrigation when we move the oaks from the front entrance. Tim said a resident who is a plumber has hooked up a temporary meter for when the trees are moved. Mike said there has been some reports of break-in. Neighbors need to stay vigilant and report anything questionable to the Sheriff's office. A resident asked about the Jog Road extension. Mike said bidding is in February and construction is scheduled for April. A resident asked if there were any plumbers in the neighborhood who could do the hookups. Mike said there are three that have been doing hookups, Gillespie Plumbing, 339-6135/339-9269, Zicaro's Plumbing, 515-0535 and Enterprise Plumbing Services, 744-7540. Mike asked Mark, who is our web master to add the names to the website. A resident asked if anyone has hooked up yet. Mike said quite a few people have been hooked up already and are on city water. **New Business** –Mike asked if there were any new residents present. One new neighbor introduced herself.

Mike said he has been teased about how long things take to get done. For example, for the past two years the Landowners Association has been trying to get the phone company to move the boxes on 155th and 75th off the corner. They cause a road hazard because they block the view of drivers trying to pull out from 75th onto 155th. There have been numerous accidents at this corner. At first AT&T said they would move one of the boxes at our expense. We have written many letters to have the boxes removed but to no avail. Gale English of SIRWCD has also recently written letters and contacted AT&T and now there has been an agreement with AT&T and the water district to move the boxes at AT&T's expense down the road on 75th closer to the canal.

Mike also wanted to mention that the Landowners elections are in May and he is not running for office again. He said this is not necessarily term limits but he feels it is time for new blood in the Association. He said it's time someone else thought about it. The offices of President, 1st Vice-President and Secretary are open for election. He is giving plenty of notice for residents to think about it and talk to friends or neighbors who might be interested. He said to contact the board if anyone is interested in running. Also he got a call from Karen Marcus today. It is late notice but they are going to have a meeting at Dwyer High School at 7:00pm on January 16th for anyone who is interested in how the county is going to spend it's money in the

Min. Cont. 1-15-08 north end of the county. They are going to have an open forum. There will be a presentation and then time for feedback. Mike said the county is facing major cutbacks and they are looking for input as to where people think money should be spent or cut back. You can also go to www.pbcgov.com.

Another date to remember is the SIRWCD resident's picnic on March 15th at the SIRWCD headquarters in Jupiter Farms. Mike said it is a lot of fun, you can meet your neighbors and they have BBQ food and other entertainment. It starts at 11:00am.

A resident said he has concerns about how cars are parking during the Unity Church services. He said cars are parking right next to the road, opening their car doors into the road and people are running across the road. He is worried someone is going to get hurt. He also wanted to know what they planned on doing during the Jog Rd. construction. Mike said he would give Diane the pastor a call and let her know of our concerns. He knows they are interested in purchasing the house just north of them and adding a parking lot between the buildings. A resident suggested hiring someone or an officer to direct traffic during services. Mike said he would talk to Diane and suggest that.

A resident wanted to know why the other interchanges to I-95 have been landscaped and ours hasn't. Chris said that question was already asked when Omelio from PBC Engineering was here. He said they were going to wait until the I-95 widening project. The county didn't want to plant trees and landscaping just to have to tear it up in a couple of years. The same for the sidewalks once Jog Rd. is done. The sidewalks will stop at 64th. The county doesn't want to extend them under I-95 just to tear them up again. The resident said it took them 3 years just to fix the light on the Donald Ross interchange.

A resident wanted to know if anyone had heard anything about what else was going to be built along with Scripts and Max Planck. He was worried about traffic. Mike said at least having businesses along that section of Donald Ross would create less traffic than residential. Chris said when Carl Domino was here at the last meeting that question came up and he said Scripts and Max Planck would need to get established and gain grants and other funding before more companies move in.

A resident asked what could be done about cars coming over the overpass and speeding up to use the right hand turning lane as a passing lane, just to cut back into the straight lane. Kevin said when the road is widened it may stop that situation. Someone suggested having a sheriff sit there during peak hours.

Mike said the next meeting is the second Tuesday in March. Mike also wanted to thank Mark Powell for his help on the website and he wanted to thank Joan Bolds for her Sandhill Crane drawings that were put up on the website. Mike also asked the park committee members who were present to stay for a short meeting.

A motion was made to close the meeting. Motion was seconded. Meeting ended at 8:05 pm.

Respectfully submitted, *Chris Reinhardt* - Secretary

Plumbers for Water Available

Several local plumbers have come forth with special pricing to help those that want water lines hooked up. As a service to our residents we are providing their contact information. This information is also on our website under important information. Enterprise Plumbing Services-Jen-744-7540; Gillespie Plumbing Services-339-6135 or 339-9269; Zicaro's Plumbing 515-0535

Bike Path to Riverbend Park

Kevin Baker while riding at Riverbend Park noted that the recently built South entrance is located by our "cattle bridge" over the C-18 canal. Initially Riverbend Park was only open for guided tours, but now it is open to the public for hiking, biking, horse back riding and canoeing. We are able to get access to the beautiful park directly over the bridge.

Horseback Riding in Riverbend Park

Riverbend Trail Riders is pleased to announce that the Riverbend Park equestrian trails officially opened as of sunrise on Friday, Dec. 21st 2007. There is a continuous "dog-ear" loop trail totaling approx. 6 miles including a water crossing, picnic tables, tie-up area and equestrian informational kiosk at the eastern access.

Access to Riverbend is available on horseback along the Ocean to Lake Greenway (C-18) Canal. At this time, there are two park access gates: The western gate, near the G-92 water structure, located at the western edge of the park on the OTL Greenway (C-18) and the eastern gate, approx. ½ mile east of the cattle bridge on the eastern side of the park on the OTL Greenway (C-18).

Community access gates to the Ocean to Lake Greenway are from Palm Beach Country Estates at 177 Trail N and the C-18 Canal and 154th Court N and the C-18 Canal.

Trailer access is available at Sandhill Crane Park (C-18 & PGA Blvd.) which offers 7 trailer parking spaces for boats or horses on a first come first serve basis and provides an equestrian access gate directly to the Ocean to Lake Greenway. Remember, "Nothing says THANK YOU like staying on the trails!" For questions about Riverbend equestrian trails, please contact horsegalliz@bellsouth.net.

Palm Beach Country Estates WHO'S WHO

We are updating our Who's Who in PBCE list for our residents. Please email Arie Strobel with your business information. Her email is ariestrob@comcast.com or call 748-6784 or fax at 575-4135. You can also contact any Board member with your information. To insure accuracy please check the website www.mypbce.org to make sure your information has been properly placed or updated. We would like to have email addresses for all listees to make it easier to communicate with you.

Landowners Association Elections

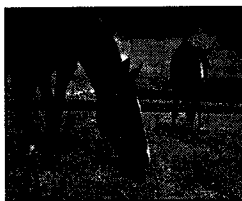
May 20, 2008

The offices of President, 1st Vice-President and Secretary will be voted on. The annual meeting will be held at Living Oaks Ministries Church 14156 64th Drive North, Palm Beach Gardens, FL 33418.

The position of President is for a one year term while the positions of 1st Vice President and Secretary are two year terms. Interested parties should contact the Landowners Association board for more information.

Country Estates Equestrians

Gallop to 1st Place



Palm Beach Country Estates equestrians captured 1st place for the large horse division in the 16th annual Jupiter Farms Community Christmas Parade, Sunday Dec 2, 2007. Equestrian residents rode on horseback from PBCE to Jupiter Farms along the Ocean to Lake Greenway. (C-18) Canal. There were nine horses, one cart and walkers.

Welcome Packets

We are preparing welcome packets for new residents of our neighborhood. Packets will be distributed at the Landowner's Association meetings. If you would like to include a business card, promotional item, special offer, etc., for new (or existing) residents, we would love to have them for the packets. All items can be delivered to Arie Strobel at 16388 75th Avenue North for inclusion. She will compile the packets.

Living Oaks Ministries Church of God *Community Easter Egg Hunt*

Saturday, March 22, 2008 11:00 AM

Children 10 & under bring your Easter Basket

& join in the fun

**(located on 64th Dr. N. just north of
Donald Ross Rd)**

561-627-9288



EXCLUSIVELY REPRESENTING

P·A·L·M B·E·A·C·H
Country Estates

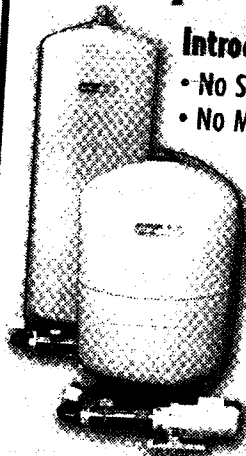


627-1118



6731 Donald Ross Rd.
Palm Beach Gardens, FL 33418

**You Don't Have to Live in
the City to Have City Water.**



Introducing the Odor Oxidizer®

- No Sulfur Smell
- No Monthly Maintenance
- No Chemicals
- Boosts Water Pressure
- NSF Approved for Safe Drinking Water
- Enclosed System Keeps Water Contaminant-Free
- Flush System Just Once-A-Year

**For Clean, Fresh
Maintenance-Free Water,
Call 741-7059.**



Comparison to city water meant to reflect maintenance-free water.

****Land Owners Meeting****

March 11, 2008 at 7:30 PM at Living Oaks Ministries Church on 64th Drive