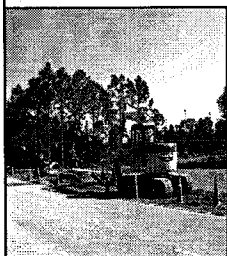


Countryside Living...

A PERIODIC PUBLICATION OF THE DONALD ROSS LANDOWNERS ASSOCIATION, INC.

Water Project on Schedule



The potable water project in Palm Beach Country Estates is moving along on schedule. The project started at the northern "P" section. It has now reached 155th place where pipe laying and hydrant installation is occurring. As residents had a choice on which side of their property they wanted to have a meter installed, by now everyone should have provided the SIRWCD district engineers a form showing their pick. If you have not done this you should immediately contact SIRWCD at 747-0550.

Donald Ross Landowners Association Meeting

November 14, 2006

Meeting was called to order at 7:35pm. Mike Danchuk, President, introduced himself and the board Officers Kevin Baker - 1st Vice President, Stephanie Duncan - 2nd Vice President, Chris Reinhardt - Secretary. Absent - Daniela Russell - Treasurer.

Daniela Russell, Treasurer was absent due to illness. Treasurer's report was left at Mike Danchuk's house so Kevin Baker went to get it. Skip Treasurer's report until numbers are here, went on to Secretary report.

Secretary's Report- Copies of the November Countryside Living Newsletter with the minutes of the July 25, 2006 meeting and September 12, 2006 meeting were mailed out and were also available at the meeting. No additions or corrections were presented. A motion was made and seconded to accept the minutes. **Guest Speaker** - Mike introduced this month's speaker, Lisa Stacy from the Solid Waste Authority. The Solid Waste Authority oversees the independent haulers. Large yard debris such as branches or tree trunks should be cut into 6 foot lengths and not weigh more than 50 lbs. Any loose yard waste such as grass clippings, pine needles, small branches or pine cones need to be put into a container for pickup. Appliances or large objects should be picked up twice a week. A maximum of 2 tires per year will be picked up **without** rims. If you have a pile that has not been picked up, call 697-2700. The SWA notifies the hauler and they have 24 hours to pick up the debris. Hazardous materials, such as paint, oil, chemicals or poisons will not be picked up at the curb. You must drop off those items at the Transfer Station. The Transfer Station is located just north of the Abacoa Publix shopping center on Military Trail.

If your recyclables are being picked up by the garbage truck instead of the recycle truck call and complain. Once the garbage hauler receives a certain amount of complaints they will be fined for picking up the recyclables.

Treasurer's Report- Kevin returned with the treasurer's report. Daniela was absent due to illness so Mike read the treasurer's report. General account \$4470.44 of that \$1511.75 are donations to Twisty Pines Playground, leaving \$2958.69 available in actual account. Twisty Pines Playground will have \$5711.75 after the \$1511.75 transfer. Legal Defense has \$2770.59. A motion was made and seconded to accept the treasurer's report.

Old Business - Water - Bob Berman gave the update. Water is still on track. As the pipes are laid an area will be closed off for testing, once the testing is done those residents will be able to hook-up if they choose.

Bob also said 300 residents had still not responded to the contractors questionnaire as to which side of your house you want the water meter located. He said you could either mail in the questionnaire or drop it off at his office. If they don't hear from a resident there is a

Officers and Committee Members

Officers:

President - Michael Danchuk	626-2530
1st Vice President - Kevin Baker	748-3376
2nd Vice President - Stephanie Duncan	575-7956
Treasure - Daniela Russell	575-5189
Secretary - Chris Reinhardt	743-8725

Committees:

Beautification - Valerie Rozzo	743-3290
Car Show - Scott Rice	723-5552
Disaster Network - Bill Bolds	626-7638
Entrance - Kirk Humphreys	748-4595
Helping Hands - Pam Malone	743-9912
Mom's Club - Sara Nakashian	748-7744
Newsletter Editor/Advert. - Nicole Campbell	626-2530
Parks - Bill Meyers	745-6632
Bob Berman	627-1118
Kirk Humphreys	748-4595
Mike Ryan	747-3233
Sidewalks - Mike Danchuk	626-2530
Welcoming - Arie Strobel	748-6784

Information:

Equestrian - Beverly Bean	575-4411
RV/Camping Club - Connie McCormick	744-2938
SIRWCD - www.sirwcd.org	747-0550
Landowners Association - www.myPBCE.org	
Park - www.twistypinesplayground.org	

default spot on the lot where they will put the meter.

A resident asked if the swales would be resoded. Bob said no sod but they will reseed the area. Bob said there has been discussion between the contractor and the Water Control District as to the condition the swales should be left. It looks like the Water Control District will be straightening out some of the swales.

Another resident asked a question about paying the total hookup fee to the Town Of Jupiter up front or taking the financing option over the 25 years. Bob suggested the financing was the better option because if you sell your house the buyer would then be responsible to pay the remainder of the fee. If you pay upfront you pay the full amount. But it's up to the homeowner to make the choice. **Roads** - Asphalt now available. Prices will be given to the engineers, then the ballots will be prepared to vote on whether you want your road paved. The ballots should go out in approximately two or three months.

Cont. Pg. 4



Message from the President

The New Year has come. Many projects are proceeding. As noted the water system is on schedule, and the Park Project is moving forward under the direction of a small but very active core group.

This year we also will see the Donald Ross Road and 69th Drive circle completed, as well as the pathways on Donald Ross Road. Once the water lines are completed we will also see the start of the long awaited pathway along 69th Drive.

Some of the projects such as the 69th Drive circle are county originated projects, however it is through our constant vigilance, that we make sure it, and other projects, end up being beneficial or minimally obtrusive to our community.

There are many changes happening in our little community. As seen by the many new beautiful homes that are cropping up, it is evident that others have also seen what we have always known. Palm Beach Country Estates is the best place to live in northern Palm Beach County.

With all the things that are happening let us all remember why we chose to live here, and make sure we work together to preserve what Palm Beach Country Estates has always been and what it is meant to be. It is not about any one project or any one issue, it is about living in a place where we have the freedom to make our choices as a community. Changes will occur, and everyone will not always agree with all the changes, but, if we respect each other and stay involved we will always remain Palm Beach Country Estates.

Wishing you all a great New Year.

Michael Danchuk

\$1,000 Reward for Vandalism

Some time during the first week of the New Year vandals again hit the front entrance signs of Palm Beach Country Estates. Both the sign on the east and west side were spray painted. Repairs were scheduled as soon as possible.

This is not the first time vandalism has occurred at the front entrance. With more mail boxes recently destroyed and other items in the front yards of our residents vandalized, the Palm Beach Country Estates Landowners Association has offered a \$1,000 reward to the first person that provides information that will lead to the arrest and conviction of the individual or individuals that spray painted the front signs this year. The past vandalism has included destruction of landscaping and sprinkler systems, costing hundreds of dollars to repair. Your identity will be held in confidence and all information will be turned over to the Sheriff's office. Please contact a Board member if you have any information on who may have caused the damage.

Classified AD:

Child Care - Palm Beach Country Estates resident - Call Marina Nuzum 561-630-5953

JEFF STROBEL

AIR CONDITIONING

All Your Cooling & Heating Needs
561-748-4553

Up to 12 Months No Payments
Same as Cash Financing and
FPL rebates on new equipment!

WE SERVICE AND INSTALL ALL
MAKES AND MODELS
RESIDENTIAL - COMMERCIAL
SAME DAY SERVICE AVAILABLE
ALL MAJOR CREDIT CARDS ACCEPTED

Have a cool day!



It's Hard To Stop A Trane®

JEFF STROBEL GAS ENERGY

Call us at 561-748-4553

or all your gas appliance needs:
Generators, pool heaters, water heaters, and
tankless water heaters

LICENSED AND INSURED #CACO58451 and LP21949



G R O U N D W O R K S

Licensed & Insured

LAWN ENFORCEMENT

Lawn Services

Monthly Maintenance

Landscape Installation

Seasonal Improvements

It's time for HURRICANE
PREPERATION!

Palm and
Hardwood tree
trimming services.

15% off

Need Fill?

We offer competitive
prices.

Call for a FREE Estimate!

Earthwork Services

Land Clearing & Grading

Debris Removal

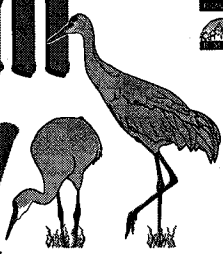
Site Development

561-748-8901

We are Palm Beach Country Estates Residents!

Sandhill Realty

INC.



When you are ready to buy or sell, call the agency that specializes in the north county.

Let our experience, knowledge and energy help you in Palm Beach Country Estates.

BUYERS: ASK ABOUT OUR FREE JOHN DEERE LAWN TRACTOR AT CLOSING!



Michael Danchuk
REALTOR®
CELL 561-339-3485

561-626-4978
sandhillrealty@aol.com
www.sandhillrealty.com

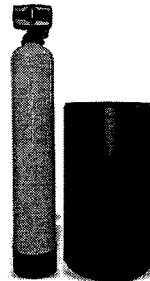


Nicole Campbell
LICENSED BROKER-OWNER
CELL 561-339-0469

312 S. Old Dixie Hwy
Suite 201
Jupiter, FL 33458

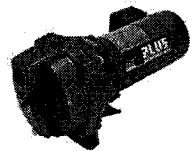


25% off for Palm Beach County Estates Neighbors



Water Filtration Systems Sales and Service

- *Water Softener
- *Reverse Osmosis
- *Pumps and Tanks
- *Salt Delivery
- *Monthly Service
- *Drum and Ion Removal



City water is on the way, but what do you do today?

Call us for more details.

561-732-9552

All PUMPS & WATER Inc.

- Pump Repair & Installation
- House, Pool & Sprinkler Pumps
- Pressure Tanks & Well Repair
- Water Softeners • Iron Filters
- Odor Filters • Drinking Water Systems
- Monthly Service • Bacteria & Water Testing

EMERGENCY SERVICE AVAILABLE

746-5664

Lic. # 2006-10071



Gemini
AUTOMOTIVE CARE

Peter Muirhead

Juno Beach Tire and Auto Center
13841 U.S. Highway One, Juno Bch, FL 33408
(561) 624-2211 Fax: (561) 624-4669
Email: junotire@bellsouth.net

GOODYEAR

PBCE RESIDENT SINCE 92
ASK ABOUT THE PBCE DISCOUNT

Gary Poland

Chuck George

P.T.L. LAWN MAINTENANCE

"Quality is our Service-

Lawns are our Business"

Palm Beach Country Estates Resident

561-747-6239

FREE ESTIMATES

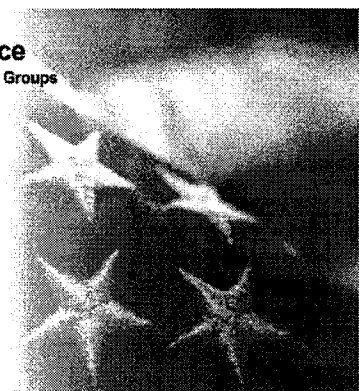
Life & Health Insurance

Affordable Plans for Individuals and Groups

Dennis Shank
Licensed Agent
14892 66th Trail North
Palm Beach Gardens, FL 33418

Office: 561-228-8843
Toll-free: 877-758-5976

FREE QUOTES ONLINE:
Insurance4MeNow.com



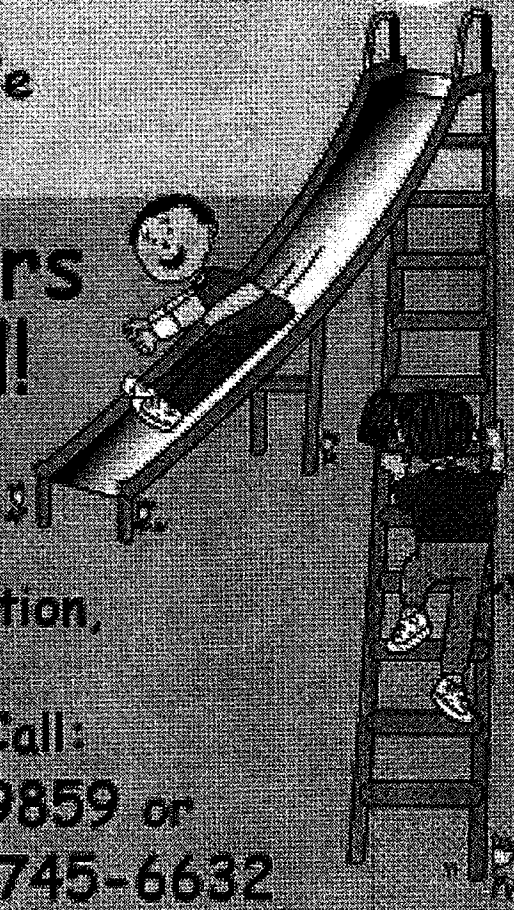
Twisty Pines Playground in PBCE

Together We
Can Do It!

Volunteers Needed!

To Volunteer,
Make A Donation,
Or For More
Information Call:
Wendi 745-9859 or
Bill or Jody 745-6632

www.TwistyPinesPlayground.org



Twisty Pines Donations

Personalized picket fences and bricks as well as donations are appreciated.

Fence pickets are \$30 for individuals and families and \$50 for businesses. You can personalize your picket with up to 17 characters per picket.

4 x 8 bricks are \$75 each and you can have up to 20 characters per line up to 3 lines per brick. 8 x 8 bricks are \$275 each and you can have up to 20 characters per line up to 6 lines per brick.

Logos also can be printed at an additional \$75 per logo. Please print your personalizations clearly and provide us your phone number if we have any questions.

We also need all levels of volunteers so please contact the committee to see how you can help or if you have any questions about the donations.

Please go to www.twistypinesplayground.org for more detailed information, email reinham@bellsouth.net or call Chris at 743-8725.

Thank you.

Please make note: Construction to start November 2007,

Also please make checks payable to:

"Twisty Pines Playground Foundation"

DONOR PARTICIPATION

Donors giving \$100 or more will be listed on the donor sign to be located in the playground courtyard.

Please fill out contact information completely:

Name: _____

Address: _____

Street

City

Zip

Telephone: _____

Email: _____

Make checks payable to:

"Twisty Pines Playground Foundation"

PO Box 306638

Palm Beach Gardens, FL 33420

Check out the Playground link on PBCE web site or the new playground Web site

For updates and more information, www.TwistyPinesPlayground.org or www.mypbce.org

For volunteer information call 745-6632 or 745-9859. Thank you for your support!

Projected construction date: November 2007, See you at the Build Days!



P.B.C.E. Residents



NEIGHBORHOOD DISCOUNT PROGRAM



**BUY BELOW INVOICE
ON ALL IN-STOCK
2006
DODGE
CHRYSLER
JEEP MODELS**

WE HAVE GREAT DEALS ON PRE-OWNED VEHICLES TOO!!

For every vehicle sold, I will donate \$50.00 to our beautiful, new park
TWISTY PINES PLAYGROUND.

**Call Your Neighbor
Scott Rice**
75th Avenue North

561-723-5552



6000 Chesapeake Blvd
West Palm Beach, FL 33411
Phone: 561-683-1011

**ARRIGO DODGE
CHRYSLER JEEP**

Living Oaks Ministries Church of God

14156 64th Drive North

Palm Beach Gardens, FL 33418

Pastor Larry Richardson

561-627-9288

Sunday 9:45 – Bible Study for all Ages

10:30 – Morning worship

Wednesday 7 – 8 PM – Youth group & Bible Study

Janero
Construction & Services, Inc.
Pools

Jupiter Commerce Park
1445 Jupiter Park Drive, Suite 5
Jupiter, Florida 33458
Telephone 561.427.6113
Facsimile 561.427.6115
Janeropools.com



Estate Pools, Spas and Fountains
License #116987

Playground - Chris Reinhardt reported the Twisty Pines Playground website was under construction and the downloadable forms for the fence pickets, bricks and components would soon be ready. Paypal is not ready yet but hopefully will be coming soon. The Playground Committee is still looking for volunteers to help on the various committees. There is much work to be done BEFORE BUILD DAY. Some of the committees that need help right now are fundraising, tools, materials and food. Check the web site for a complete list of volunteer opportunities. You don't have to be skilled at building to help out. During the build week we will need help with serving food, checking tools in and out, and at the volunteer check in table. For the workers with small children we will have on onsite day care so we will need volunteers for that. We had originally wanted to do the build the last week of January 2007. The window we originally had hoped for was January through March to stay in the cool months and to avoid the hurricane season. But due to the water project scheduled to be in that area at that same time and safety concerns for the volunteer builders we have moved the build date to the first week in November 2007. This way we can avoid the water project, which is scheduled to be completed in June or July 2007, stay in the cool months and avoid the hurricane season and the holidays. A question was asked by a resident about the cost to build the playground. If we have to buy all the materials the cost is estimated to be \$125,000. That's why fundraising is so important. This price can also be lowered by donations of building materials from local and national building supply companies. To clarify for new residents the Twisty Pines Playground will be a volunteer community-built playground within the Margaret Berman Memorial Park on the corner of 69th and 155th. The Twisty Pines Playground Foundation Inc. has now been officially incorporated and the paperwork for the 501(c3) designation, to become a not-for-profit organization, is in the process of being filed out. If anyone would like to help on any of the

committees contact Bill at 745-6632 or bjmeyers@bellsouth.net, or Chris Reinhardt at 743-8725 or reinhardm@bellsouth.net. Joan Bolds spoke about having more recreation opportunities for teens in the area. This might keep them out of trouble or lower the ATV complaints. She suggested having organized RC car races or a basketball hoop at the park or some other activities for older kids. Mike said a meeting with the county engineers is going to be scheduled and we could ask how much area a basketball court would need.

Note: The Park was originally envisioned as a passive park with a tot-lot. It has grown some since then but we are limited to the area available and the wishes of the neighbors adjacent to the park.

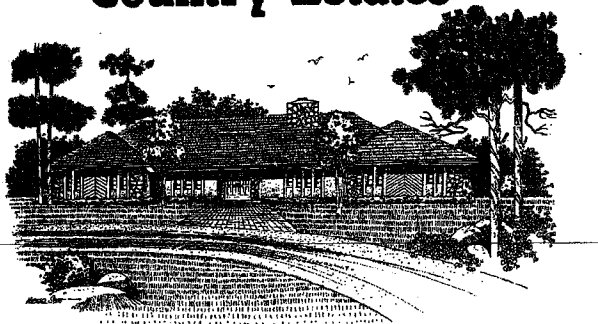
Neighborhood Watch Program/C.O.P./Helping Hands - Joan Bolds said she has only received one call regarding the Neighborhood Watch Program. Anyone interested in the Neighborhood Watch Program call Joan. Bill Bolds said he has not received any calls regarding the C.O.P.s program. A suggestion was made to add a line to the Landowners Association renewal form regarding the Helping Hands program. Helping Hands is a phone number list of people willing to help our elderly or handicapped residents who might need help in case of a hurricane or other disaster. If anyone is interested call Joan or Bill at 626-7638.

Community Spotlight - A new column will be added to the newsletter for any residents who want to acknowledge a special event or accomplishment. Contact Mike Dan-chuk with the information. **New Business - New Residents** - No new residents. Resident Ken Conklin wanted to let people know about the new Elks Lodge on Indiantown Rd. in the Jupiter Farms Publix shopping center. He wanted to let people know they could join and become members. The Elks donate for scholarships, they have free physical therapy vans to visit children who need physical or occupational therapy. They also have camps for kids. The Boy Scouts use the lodge. Membership is \$100 a year. The lodge has a social club, restaurant serves breakfasts and dinners. If you need any other information call Ken at 747-9883. Motion to adjourn was made and seconded. Meeting was adjourned at 8:25 p.m.

Respectfully submitted, *Chris Reinhardt* - Secretary

EXCLUSIVELY REPRESENTING

P·A·L·M B·E·A·C·H
Country Estates

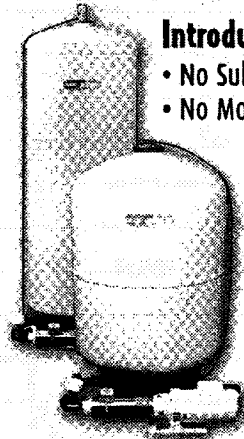


627-1118



6731 Donald Ross Rd.
Palm Beach Gardens, FL 33418

You Don't Have to Live in the City to Have City Water.



Introducing the Odor Oxidizer®

- No Sulfur Smell
- No Monthly Maintenance
- No Chemicals
- Boosts Water Pressure
- NSF Approved for Safe Drinking Water
- Enclosed System Keeps Water Contaminant-Free
- Flush System Just Once-A-Year

**For Clean, Fresh
Maintenance-Free Water,
Call 741-7059.**



Comparison to city water meant to reflect maintenance-free water.

****Land Owners Meeting****

January 16, 2007 at 7:30 PM at Living Oaks Ministries Church on 64th Drive

Donald Ross Land Owners, Assoc.
PO Box 30638
Palm Beach Gardens, FL 33420